

2023-24  
BATCH



# INTERNATIONAL SUSTAINABILITY PROGRAM

# ISP

INFORMATION BOOKLET & PROSPECTUS



*New York City  
January 2023*

On behalf of GBRI and NASA India, we are excited to announce the 3rd batch of the International Sustainability Program (ISP) starting March 15, 2023. Earlier this month, GBRI-NASA jointly inaugurated the ISP in the presence of an exuberant audience at College of Engineering, Trivandrum (CET) along with awarding a NASA India Scholarship Fund (NISF) scholarship in memory of Ar.Vijay Varughese Cherian.

Based in NYC, with a presence around the world, GBRI is an online education platform, with a mission to make sustainability and social impact resources affordable and accessible to everyone across the globe. With a library of over 400 courses in sustainability and project controls, and a network of over 200 subject matter experts in both fields, GBRI is the premier sustainability education provider in the world. GBRI is also a proud partner of the UNSDG where we create courses and social experiments in support of the 17 Sustainable Development Goals (SDGs).

NASA is a student association, one of its kind for the undergraduate students of Architecture in India. NASA was founded with a common aim and objective to provide the students a platform for interaction, a platform where students from varied cultural backgrounds would learn and share their knowledge.

Jointly designed by GBRI and NASA, the ISP is designed for students and young graduates who are interested in a career in sustainability as it relates to the built environment. Core concepts of ISP include climate change, green buildings, environmental justice, social impact, human health & wellness, and self-development. The ISP prepares and enables candidates not only to become sustainability champions but also social impact leaders.

On behalf of GBRI and NASA India, we invite you review the information booklet and join the International Sustainability Program.

Respectfully,

*Jeslin Varghese*

**Jeslin Varghese**  
Vice President - GBRI

*Tarun Krishna*

**Tarun Krishna**  
President - NASA

# TABLE OF

# C O N T E N T S

04

ABOUT ISP

05

CORE CONCEPTS

06

SOCIAL IMPACT

06

ELIGIBILITY, TIME MANAGEMENT  
& EXPECTATIONS

07

TRACK 1 – SUSTAINABILITY  
SCHOLAR

08

TRACK 2 – SUSTAINABILITY  
AMBASSADOR

09

ROADMAP

10

FACULTY & TEAM

12

TUITION & SCHOLARSHIPS

13

WHY JOIN THE ISP &  
TESTIMONIALS

18

FAQS

20

APPLICATION & IMPORTANT  
DATES

# ABOUT

# ISP

INTERNATIONAL  
SUSTAINABILITY  
PROGRAM



## WHAT IS THE INTERNATIONAL SUSTAINABILITY PROGRAM (ISP)?

- ISP is an **online certification program** designed for students and young graduates who are interested in pursuing a career in Sustainability as it relates to the built environment.
- The certification program has **two Tracks/Semesters** each spanning **6 months** with an emphasis on climate change, green buildings, environmental justice, social impact, human health & wellness, and self-development.
- Candidates will work both **individually** and in **teams** with peers from around the world enabling a collaborative atmosphere.
- Candidates will get acclimated to green building guidelines such as **AIA COTE measures of sustainability, IGBC, GRIHA, LEED, BREEAM, Estidama, WEDG, LBC and WELL building standard.**
- Candidates will be prepared to take the **IGBC AP, LEED Green Associate, LEED AP** and the **WELL AP exams.**
- Candidates will learn from and interact with **guest speakers** representing the industry and academia.
- In addition, the ISP prepares students for **higher studies and internships and employment** by aiding with resume building, LinkedIn profile upgrades, writing SOP essays, and soft skills development, enhancing presentation, and public speaking skills.

# ISP CORE

# CONCEPTS



# SOCIAL IMPACT

GBRI & NASA prioritizes accountability through a data-driven performance review and on-site assessment. Candidates will be working individually and as a group on local social impact projects as part of the ISP curriculum.

**THE ISP PREPARES AND ENABLES STUDENTS NOT ONLY TO BECOME SUSTAINABILITY CHAMPIONS BUT ALSO SOCIAL IMPACT LEADERS**



## ELIGIBILITY, TIME MANAGEMENT, & EXPECTATIONS

### WHO SHOULD APPLY FOR THE ISP ?

Undergraduate students as early as 2nd year, and post graduate students in Architecture, Engineering,

Environmental Science, Planning and related fields can apply. Application is online. Link to the application can be found on the last page of this document.

### HOW MUCH TIME ARE STUDENTS EXPECTED TO WORK WEEKLY ON ISP RELATED TASKS?

**Students are expected to spend 7-10 hours a week on an average.** There is no set time and students may work on the tasks according to their schedule. Time management is one of the skillsets students will acquire through ISP.



*Time management was definitely something I learnt through ISP. I think any architect-to-be would be grateful for*

**-LIESL BRAGANCA-**

Sustainability Fellow, Architect, Royal College of Art, London- Masters in Architecture Candidate

# TRACK

# 1

## SUSTAINABILITY SCHOLAR

Leading to an International Sustainability Scholar badge, Track 1 or Semester 1 consists of self-paced courses and online live classes taught over Zoom, that will prepare students to become a Climate Change Ambassador, earn the IGBC AP and LEED Green Associate credentials, master presentation, public speaking and team building skills.



### 1 KICKSTART YOUR SUSTAINABILITY JOURNEY

#### CLIMATE CHANGE AMBASSADOR

3-WEEK SELF-PACED COURSES

TOPICS INCLUDE:

- OCEANS IN CRISIS
- CLIMATE CHANGE AND HEALTH
- JOURNEY OF YOUR WASTE
- THE PARIS AGREEMENT
- CORPORATE SUSTAINABILITY REPORTING
- TINY HOMES
- IMPACT INVESTING



2

#### INDIAN GREEN BUILDING ASSOCIATE

4-WEEK SELF-PACED COURSE

WEEK 1

- INTRODUCTION TO IGBC
- MODULE 1 - SUSTAINABLE ARCHITECTURE & DESIGN
- MODULE 2 - SITE SELECTION & PLANNING

WEEK 2

- MODULE 3 - WATER CONSERVATION
- MODULE 4 - ENERGY EFFICIENCY

WEEK 3

- MODULE 5 - BUILDING MATERIALS & RESOURCES
- MODULE 6 - INDOOR ENVIRONMENT QUALITY
- MODULE 7 - INNOVATION & DEVELOPMENT

WEEK 4

- IGBC CASE STUDY 1 & 2



3

#### LEED GREEN BUILDING ASSOCIATE

5 WEEK LIVE ONLINE SESSIONS

WEEK 1

- INTRODUCTION TO SUSTAINABILITY AND LEED

WEEK 2

- LEED PROCESS AND INTEGRATIVE STRATEGIES

WEEK 3

- MODULE 1 - LOCATION & TRANSPORTATION
- MODULE 2 - SUSTAINABLE SITES
- MODULE 3 - WATER EFFICIENCY
- MODULE 4 - ENERGY & ATMOSPHERE

WEEK 4

- MODULE 5 - MATERIALS & RESOURCES
- MODULE 6 - INDOOR ENVIRONMENTAL QUALITY, INNOVATION & REGIONAL PRIORITY

WEEK 5



4

#### INTERNATIONAL SUSTAINABILITY SCHOLAR

7 WEEK LIVE ONLINE SESSIONS

INCLUDES:

- PUBLIC SPEAKING GUIDANCE
- PRESENTATION SKILLS
- GUEST LECTURES



6

#### EARN THE INTERNATIONAL SUSTAINABILITY SCHOLAR BADGE, AND PURSUE TRACK 2

# TRACK 2

## SUSTAINABILITY AMBASSADOR

Leading to an International Sustainability Ambassador, Track 2/Semester 2 of the ISP comprises of self-paced courses and online live classes taught over Zoom that will prepare students to master advanced green build topics such as net zero guidelines, energy modeling, daylighting simulation, and earn the LEED AP and WELL AP credentials. Candidates will further enhance public speaking, work in teams and learn how to effectively present resumes, SOPs, application packages for higher education and job applications.



### 1 COMPLETION OF TRACK 1 IS A MUST BEFORE PURSUING TRACK 2

#### LEED AP

7-WEEK SELF-PACED COURSE

WEEK 1

- LEED PROCESS AND PROJECT SURROUNDINGS
- INTEGRATIVE STRATEGIES

2

WEEK 2

- LOCATION & TRANSPORTATION

WEEK 4

- WATER EFFICIENCY

WEEK 6

- MATERIALS & RESOURCES

WEEK 3

- SUSTAINABLE SITES

WEEK 5

- ENERGY & ATMOSPHERE

WEEK 7

- ENVIRONMENTAL QUALITY



#### DAYLIGHTING SPECIALIST

4 WEEK LIVE ONLINE OR SELF-PACED

WEEK 1

- MODULE 1 - INTRODUCTION TO DAYLIGHTING
- MODULE 2 - DAYLIGHTING STRATEGIES : PART 1

WEEK 2

- MODULE 3 - DAYLIGHTING STRATEGIES : PART 2
- MODULE 4 - DAYLIGHTING STRATEGIES : PART 3

3

WEEK 3

- MODULE 5 - DAYLIGHTING STRATEGIES : PART 4
- MODULE 6 - DAYLIGHT METRICS

WEEK 4

- MODULE 7 - DAYLIGHT SIMULATION TOOL
- MODULE 8 - DAYLIGHTING IN GREEN BUILDING RATING SYSTEMS



#### WELL AP

7-WEEK SELF-PACED COURSE

WEEK 1

- WELL AP V2 EXAM PREPARATION - 10 THINGS TO KNOW
- GBRI ROAD MAP & RESOURCES
- STUDY BUDDY

WEEK 2

- WELL CERTIFICATION & WELL PORTFOLIO
- AIR AND WATER CONCEPTS

WEEK 3

- NOURISHMENT, LIGHT & MOVEMENT

WEEK 5

- MIND & COMMUNITY, AND INNOVATION FEATURES

WEEK 7

- WELL AP MOCK EXAM

WEEK 4

- THERMAL COMFORT, SOUND, MATERIALS

WEEK 6

- WELL CONCEPT WISE QUIZZES



#### INTERNATIONAL SUSTAINABILITY AMBASSADOR

7 WEEK LIVE ONLINE / NASA CONVENTION WORKSHOP

INCLUDES:

- PUBLIC SPEAKING GUIDANCE
- PRESENTATION SKILLS
- GUEST LECTURES

5



6

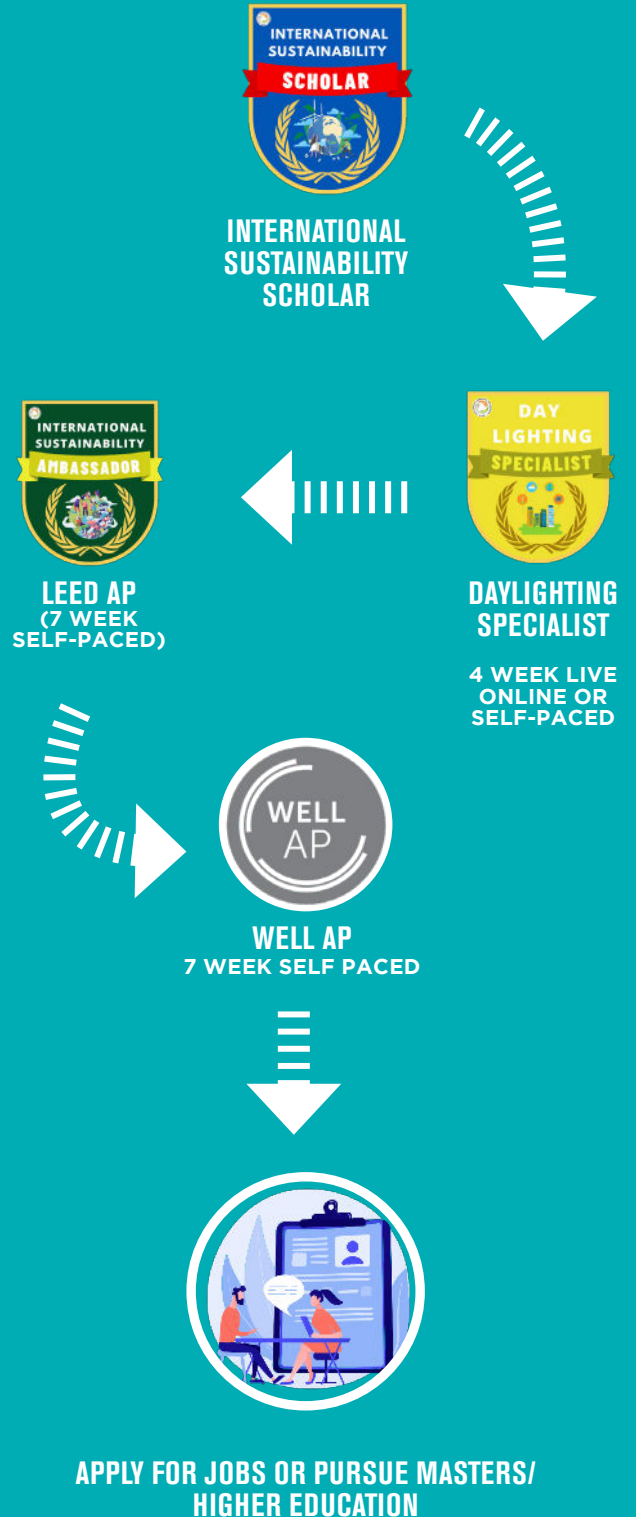
EARN THE INTERNATIONAL SUSTAINABILITY AMBASSADOR BADGE, AND EXPLORE THE WORLD OF POSSIBILITIES WHETHER ITS APPLYING FOR A JOB WITH CONFIDENCE OR PURSUING HIGHER EDUCATION



# TRACK 1 / SEMESTER 1 SUSTAINABILITY SCHOLAR



# TRACK 2 / SEMESTER 2 SUSTAINABILITY AMBASSADOR



# ISP PROGRAM

# TEAM MEMBERS

## PROGRAM FACULTY MEMBERS



**Jeslin Varghese**  
*Program Director  
& Faculty*



**Dr Sreelekshmi S**  
*Program  
Co-ordinator*



**Michael Kaleda**  
*Executive Director,  
GBRI*



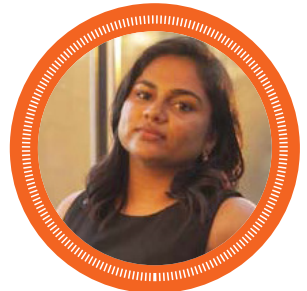
**Jyotika Girdhar**  
*Environmental  
Analyst*



**Paulina  
Marinkovic**  
*Strategic Consultant  
& Climate Change  
Project Manager*



**Sean O'Brien**  
*Senior Project Manager,  
Tetra Tech Inc.*



**Harsha Varghese**  
*Senior Sustainability  
Design Associate and  
Outreach Manager,  
GBRI*

## GUEST SPEAKERS (PAST & PRESENT)



**Chitra  
Vishwanath**



**Michael Kaleda**



**Avery  
Miles**



**Seetha  
Raghupathy**



**Jeslin  
Varghese**

## GUEST SPEAKERS (PAST & PRESENT)



**Paulina**  
*Marinkovic*



**Sean O'Brien**



**Poorva Ujwal**  
*Keskar*



**Satvik Bhatt**



**Ritik Khare**



**Aparna**  
*Gokhale*



**Daksh**  
*Gandhi*



**Parshva**  
*Shah*



**Samridhhi**  
*Khare*

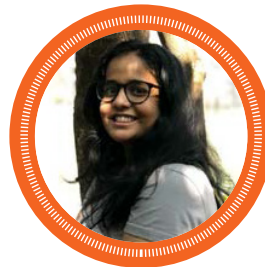
## PROGRAM AMBASSADORS



**Adawn**  
*Joseph*



**Smera**  
*Sera*



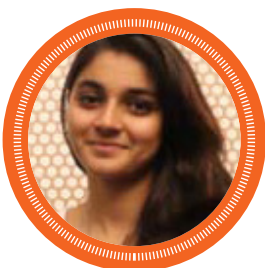
**Fatema**  
*Khurshid*



**Aishwarya**  
*Nemade*



**Tamanna**  
*Brar*



**Shreya**  
*Jaiswal*



**Liesl**  
*Braganca*



**Samridhhi**  
*Khare*



**Simarjeet**  
*Nagpal*



**Aparna**  
*Gokhale*

# ISP TUITION & SCHOLARSHIPS



**THE TUITION FEES FOR THE INTERNATIONAL SUSTAINABILITY PROGRAM (ISP) IS**

**\$699 for Track 1/ Semester 1**

**\$999 for Track 2 / Semester 2** (COMPLETION OF TRACK 1 IS NECESSARY)

GBRI and NASA's goal is to make ISP affordable, inclusive and accessible to everyone. The tuition fees for semester one is \$699 (Roughly Rs. 56,000). All qualified applicants will receive a 50% scholarship bringing the tuition down to \$349 (Rs.28,000) for the 1st semester. Your application will be utilized for additional scholarships ranging from 50% to 100% thereby bringing the tuition between \$0 to \$349 (between Rs.0 and Rs 28000). Our admission process and scholarship evaluation is based on a number of factors including your application, academic merit, your essay and financial information submitted. Any information you submit under the financial section will not be shared publicly. The level of additional scholarship you receive will not be shared publicly.

**MORE THAN 80% OF THE STUDENTS  
WILL RECEIVE FINANCIAL  
ASSISTANCE /SCHOLARSHIPS**

# WHY

## JOIN THE ISP?

### WHY JOIN THE ISP & BECOME A **SUSTAINABILITY AMBASSADOR?**

- 1** Get trained in sustainability, climate change, social impact, green and net zero buildings!
- 2** **Master sustainability and green building design guidelines such as AIA COTE, IGBC, LEED, WELL and more**
- 3** Join a network of young change makers!
- 4** **Standout from your peers, boost your credentials, and build your resume!**
- 5** Enhance your visibility on professional social media platforms with ISP achievements and badges.

# ISP PROGRAM

## TESTIMONIALS



“Being part of GBRI's international sustainability program has had a huge impact on my sustainability journey as an architect. Being able to meet & work with other sustainability enthusiasts & hear from specialists in the field was my favorite part about this journey. I also took the chance & successfully passed my WELL Accredited Professional exam from the first attempt using GBRI's comprehensive study materials, I enjoyed the ease of taking courses online at my own pace, and the 5 weeks road map helped me stay consistent & focused”

**-Alaa Shibly-**

LEED Green Associate, ESTIDAMA PQP,  
WELL AP, Design Architect, Dubai



“GBRI's 'International sustainability program' deepens my knowledge of sustainability and broadened my perspective. Weekly meetings and assignments helped me learn new concepts and skills. Peer learning was a highlight of this program for me. This program made me confident to apply my knowledge in practice also.”

**-Rutuja Ghadage-**

Sustainability Ambassador,  
SBI Youth for India Fellow



ISP was an amazing platform that helped me find a voice and propel in the area of sustainability. It came as a catalyst to my plans of pursuing career interest in the area of sustainability. One particular activity helped me the most during my time at ISP was writing a research article on the topic of one's choosing. That was the point where I came to realize that my ideas and voice are an important contribution to the community of sustainable enthusiasts. With the support of Jeslin and the experts, I am now working deeply with people carrying the same ideas and striding towards achieving the goal of creating sustainable societies

**-Shreya Jaiswal-**

LEED Green Associate, Climate Change Ambassador,  
SUNY Buffalo - Master of Architecture Candidate



The ISP program is a great platform to learn about sustainability and to develop soft skills. By engaging with various universities and industry professionals, I was able to gain excellent industry insights. The ISP program also helped me make new friends with the fellow interns all over the world which further broadened my horizons.

**-Adawn Babu Joseph-**

Construction Management Intern at Tesla, Graduate  
Student at Georgia Tech Civil Engineering, Climate Change  
Ambassador, LEED® Green Associate, CMIT, S.M.ASCE



To someone who is new to the idea, the climate change course series is able to put it straight. For the people who have delved deeper into the straits of sustainable lifestyle or professional practice, the talk serves as a refresher and reminder to take everybody along.

**-Simarjeet Nagpal-**

ISP Batch 2 mentor, American India Foundation Fellow, Climate Change Ambassador, The University of British Columbia – Master of Community & Regional Planning Candidate



The ISP drastically changed my perspective on teamwork and leadership. It was very meaningful to see my colleagues and myself become more and more comfortable with public speaking and delegation throughout the course of the program. We accomplished much more than what was defined as the scope of the program. Learning about LEED and designing modules to help students helped solidify our concepts. It was really interesting to work with students from other countries on concepts we all cared about, such as climate change and environmental pollution. This program helped my growth both personally and professionally. It informed my decision to study these topics for my higher education.



**-Samriddhi Khare-**

Sustainability Ambassador, Architect, University of Pennsylvania -Masters in City Planning Candidate



The GBRI programme aids in gaining in-depth understanding of sustainable development and green building design. As I work with BIM, it aids in the development of overall structure. programme also , which aids in understanding various people's perspectives on sustainability, climate change, and green construction.

**-Nayan Narolia-**

Sustainability Ambassador, BIM Engineer | University of Plymouth -Masters in BIM Candidate



The ISP program has been a great experience for me which helped me gain confidence and become a better team player. It has improved my communication and presentation skills which has helped me greatly in my current job. I'm grateful to have had the opportunity to be a part of the ISP cohort, where I got to meet wonderful people around the world. Even though all the interaction was on an online platform, we all members could manage our time and work on projects seamlessly, and eventually we were able to learn a lot from each other. Thank you Jeslin sir for giving us this opportunity!



**-Smera sera Oommen-**

Sustainability Ambassador, Green Building Analyst, LEED AP BD+C, WELL AP, IGBC AP, GEM CP



I wish I had something like ISP in my college days. It's such a great platform if you want to explore and make a career in sustainability, climate, and green buildings sector. It aligned perfectly with my needs. It was a mix of everything from research work, to having an opportunity to upgrade and learn on various sustainability related topics with access to a vast portfolio of courses, getting the collaborative experience of working with peers from multidisciplinary backgrounds and countries, and the best part for me was the guest lectures by national and international experts. The weekly meetings to improve our interpersonal and communications skills was a cherry on the top. That is the reason that someone like me who is dreadful of public speaking and have immense stage fright, got the push and the needed confidence to deliver a full live session and a guest lecture on this platform.

**-Aparna Gokhale-**

Sustainability E-learning Manager at GBRI, WEDG Associate, IGBC AP, GEM CP, Certified Impact Rater, Construction Life Cycle Assessment Specialist

# ISP PROGRAM

# TESTIMONIALS



ISP program helped me to interact with like minded individuals focusing primarily on the importance of sustainability. Moreover, the program helped me to be part of a team working towards a common goal of promoting sustainability, sharing knowledge and ideas.

**-Abhishek Kurian-**  
Sustainability Ambassador, Texas A&M University Masters in Transportation Engineering Candidate



I was always interested in sustainability and was looking for something that can open doors for me to learn and expose myself to new ideas and principles related to sustainability and green buildings. I knew GBRI's ISP program would be a great opportunity and I was fortunate enough to get the internship. During the internship, we had discussions on a variety of topics presented by each intern, and it was a great way to learn things at the same time to improve our public speaking and presentation skills. We also had access to a number of courses for Continuing Education, LEED exam preparations and many more. I'm now a LEED Green Associate, thanks to GBRI's exam prep and Jeslin's support. I'm very grateful that I got to be a part of GBRI and I wish every student take the chance to learn from GBRI.

**-Uma kunnath-**  
Sustainability Ambassador,  
Architectural Designer, Georgia



Good day.I want to start by saying how thrilled I was to see a notification from the GBRI ISP WhatsApp group today. It also brought back memories of my internship, when I was first a little hesitant and apprehensive as well, but by the end I had gained greater confidence in both my speech and in my plans for a sustainable future. I want to express my gratitude for your programme, which has benefited my teammates and me in a variety of ways that aren't even included in this box.

**-Sonali Ranjan-**  
ISP Coordinator 2023-24,  
Freelance Architect



When I came across the ISP program, I was eager to become a part of it. I have always been interested in sustainability and how it can become a part of the lifestyle to contribute to a greater good of the society. The program helped me in instilling the sensitivity about sustainability and learn various new concepts about different rating system that exists, confidence and an essence of teamwork while working with students of various college and universities. It helped me broaden my perspective. It was my safe space as my escape. It boosted my confidence that helped me in my future endeavours. If I could, I would turn back time and do it all over again. Couldn't thank GBRI enough for the opportunity. :)

**-Dania Irshad-**  
M. Arch in Architecture Pedagogy,  
Sustainability Ambassador



# READY TO APPLY?

# 1

## ISP Orientation

Familiarize yourself with the ISP by reading this booklet before completing the application form for enrollment and scholarship.

# 2

## Evaluation & Selection

GBRI-NASA ISP Committee will evaluate the applications, contact candidates for interview as needed before admitting to the ISP with full or partial scholarship

# 3

## Program Kick-off Meeting

Join the elite club of GBRI-NASA international sustainability champions as results are announced.



<https://zfrmz.com/Z9pLfkI2hgfA6l1Lfo7a>

# FREQUENTLY ASKED QUESTIONS

## FAQs

### Q ■ WHAT ARE THE ELIGIBILITY REQUIREMENTS TO JOIN THE INTERNATIONAL SUSTAINABILITY PROGRAM (ISP)?

Undergraduate students as early as 2nd year and post graduate students are eligible to apply for the International Sustainability Program

### Q ■ WHAT ARE THE ELIGIBILITY REQUIREMENTS TO JOIN THE INTERNATIONAL IS THE INTERNATIONAL SUSTAINABILITY PROGRAM (ISP) ONLY FOR STUDENTS IN ARCHITECTURE?

While the International Sustainability Program (ISP) was originally developed for mainly students in Architecture, students in Engineering, Environmental Science, Planning and related fields will find it beneficial and may apply. Please join the orientation meeting to see whether the ISP is a good fit for you

### Q ■ CAN FACULTY MEMBERS JOIN THE INTERNATIONAL SUSTAINABILITY PROGRAM (ISP)?

GBRI will be launching a separate International Sustainability Program for Faculty members (GBRI Certified Sustainability Faculty) in late 2023. In the meantime, faculty members may join the ISP program.

### Q ■ WHAT IS THE TUITION FEES FOR THE INTERNATIONAL SUSTAINABILITY PROGRAM (ISP)?

The Tuition fees for the International Sustainability Program (ISP) is \$699 for track 1/ 1st semester & \$999 for track 2/ 2nd semester.

### Q ■ ARE SCHOLARSHIPS/FINANCIAL AID AVAILABLE FOR THE INTERNATIONAL SUSTAINABILITY PROGRAM (ISP)?

To enhance participation, and recognize talented students, full and partial scholarships are available. Please join the orientation meeting to learn more about scholarships.

### Q ■ IS GBRI'S CLIMATE CHANGE AMBASSADOR PROGRAM PART OF THE ISP?

GBRI's Climate Change Ambassador Program is part of the ISP. The Climate Change program is a collection of courses, articles, and meaningful exercises that enable you to learn more about climate change, progress steadily, and become an Ambassador for our planet.

### Q ■ WHAT IS THE ADVANTAGE OF THE CLIMATE CHANGE AMBASSADOR PROGRAM?

Climate change Ambassador program would boost up your resume to a higher level. Whether it's a job interview or a group discussion, as a Climate change Ambassador, you will be able to engage in conversations pertaining to Climate change, Architecture, and the built environment.

### Q ■ IS IGBC AP EXAM PREPARATION PART OF THE INTERNATIONAL SUSTAINABILITY PROGRAM (ISP)?

Yes. IGBC AP exam preparation is part of the International Sustainability Program (ISP) under track 1. In addition, candidates will also be prepared to take the LEED Green Associate under track 1. Under Track 2, candidates will be prepared to take the LEED AP exam with BD+C specialty and WELL AP credential.

# FREQUENTLY ASKED QUESTIONS

## FAQs

### **Q ■ IS LEED GREEN ASSOCIATE AND LEED AP EXAM PREPARATION PART OF THE INTERNATIONAL SUSTAINABILITY PROGRAM (ISP)?**

Yes. LEED Green Associate exam preparation is part of the International Sustainability Program (ISP) under track 1. In addition, candidates will also be prepared to take the IGBC AP exam under track 1. Under Track 2, candidates will be prepared to take the LEED AP exam with BD+C specialty and WELL AP credential.

### **Q ■ WHAT DOES GBRI'S IGBC AP EXAM PREP CONSIST OF?**

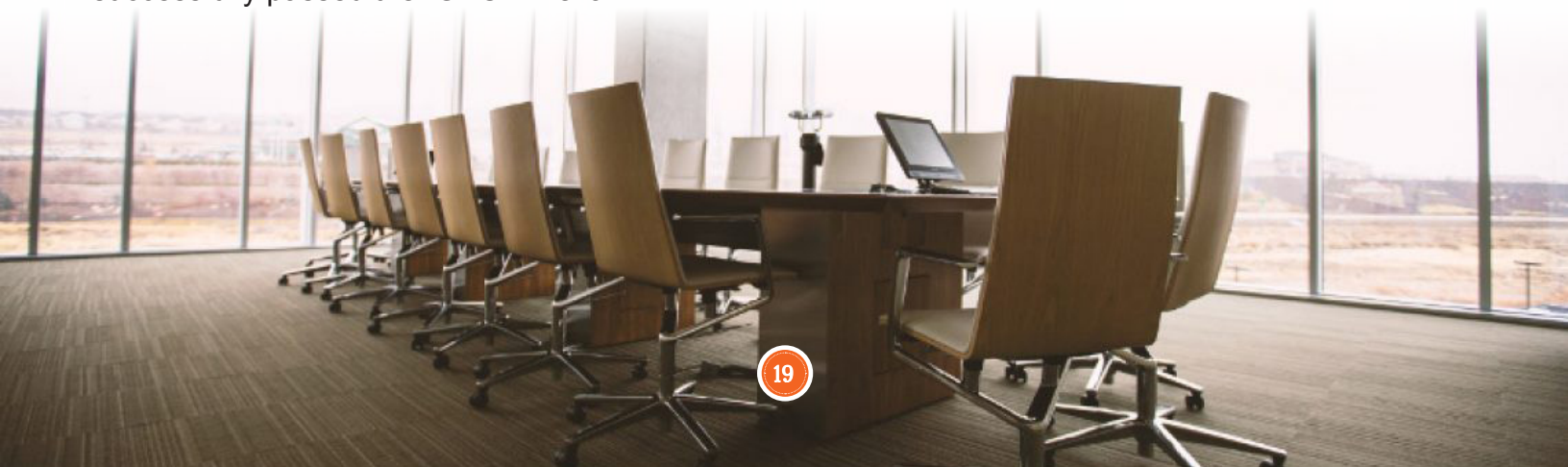
GBRI's IGBC AP Exam Prep consists of self-paced audio-visual modules that cover sustainable architecture & design, site selection & planning, water conservation, energy efficiency, building materials & resources, indoor environmental quality, and innovation & development. In addition, there are 2 IGBC case studies presented to strengthen your foundation on green building concepts and the IGBC rating system. GBRI's exam prep also consists of hundreds of practice questions and a simulated mock exam. The mock exam will greatly help you if you are planning to take the IGBC AP or IGBC AP- Associate Exam. GBRI's IGBC AP exam prep materials were developed in collaboration with architects in India who have successfully passed the IGBC AP exam.

### **Q ■ WHAT IS THE LEED GREEN ASSOCIATE CREDENTIAL?**

Developed by USGBC and administered by GBCI, the LEED Green Associate credential is for people who have a documented, up-to-date understanding of the most current green building principles and practices. This is basically a foundational credential and, for many, it is the first step before earning advanced credentials such as the LEED AP with specialty.

### **Q ■ HOW WAS GBRI'S LEED EXAM PREP MATERIALS DEVELOPED?**

GBRI is a USGBC Education Partner and our LEED Green Associate, and LEED AP exam prep materials were developed in collaboration with architects, engineers, and building professionals who have successfully passed the LEED Green Associate and LEED AP exams. Developed by industry experts, our comprehensive exam preparation materials will give you everything you need to successfully pass your exam. The preparation materials are part of the ISP. Please note that the fees to register for the exam is not covered in the tuition as it is outside of GBRI's scope.



# WHY WAIT...

START YOUR JOURNEY TODAY TO BECOME AN  
INTERNATIONAL SUSTAINABILITY AMBASSADOR

## IMPORTANT DATES

**INAUGURATION OF ISP 3RD BATCH: 13<sup>TH</sup> JANUARY**

**APPLICATION OPEN: 27<sup>TH</sup> JANUARY 2023**

**APPLICATION DEADLINE: 10<sup>TH</sup> FEBRUARY 2023**

**FIRST DAY OF ISP: 15<sup>TH</sup> MARCH 2023**

**LAST DAY TO DROP FROM SEMESTER 1: 15<sup>TH</sup> APRIL 2023**



IN ASSOCIATION WITH



## APPLICATIONS LINK

 <https://zfrmz.com/RELcfo0B7xkW2cnQg4KE>

## MORE QUESTIONS ?



**Jeslin Varghese**  
*Program Director  
& Faculty*



**Dr Sreelekshmi S**  
*Program  
Co-ordinator*



**+1 (646) 809-7356**

 <https://www.gbrionline.org/international-sustainability-program/>